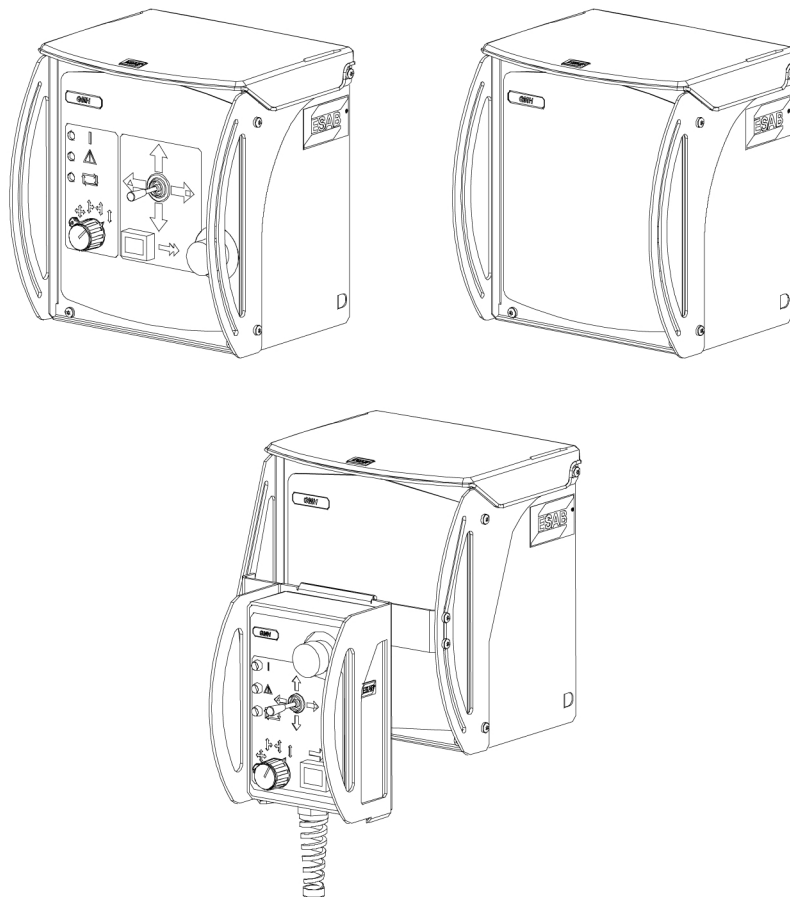


GMH



Spare parts list

Ordering no.	Product
0460 503 880	GMH complete
0460 503 881	GMH with MMC complete
0460 698 880	GMH with portable control box
0460 570 880	Portable control box
0416 688 881	Sensor, Generation 2
0416 739 880	Slide cross for sensor
0821 425 880	Slide cross for sensor and laser lamp

Spare parts may be ordered through your nearest ESAB dealer, see esab.com. When ordering, please state product type, serial number, denominations and ordering numbers according to the spare parts list. This facilitates dispatch and ensures correct delivery.

Maintenance and repair work should be performed by an experienced person, and electrical work only by a trained electrician. Use only recommended spare parts.

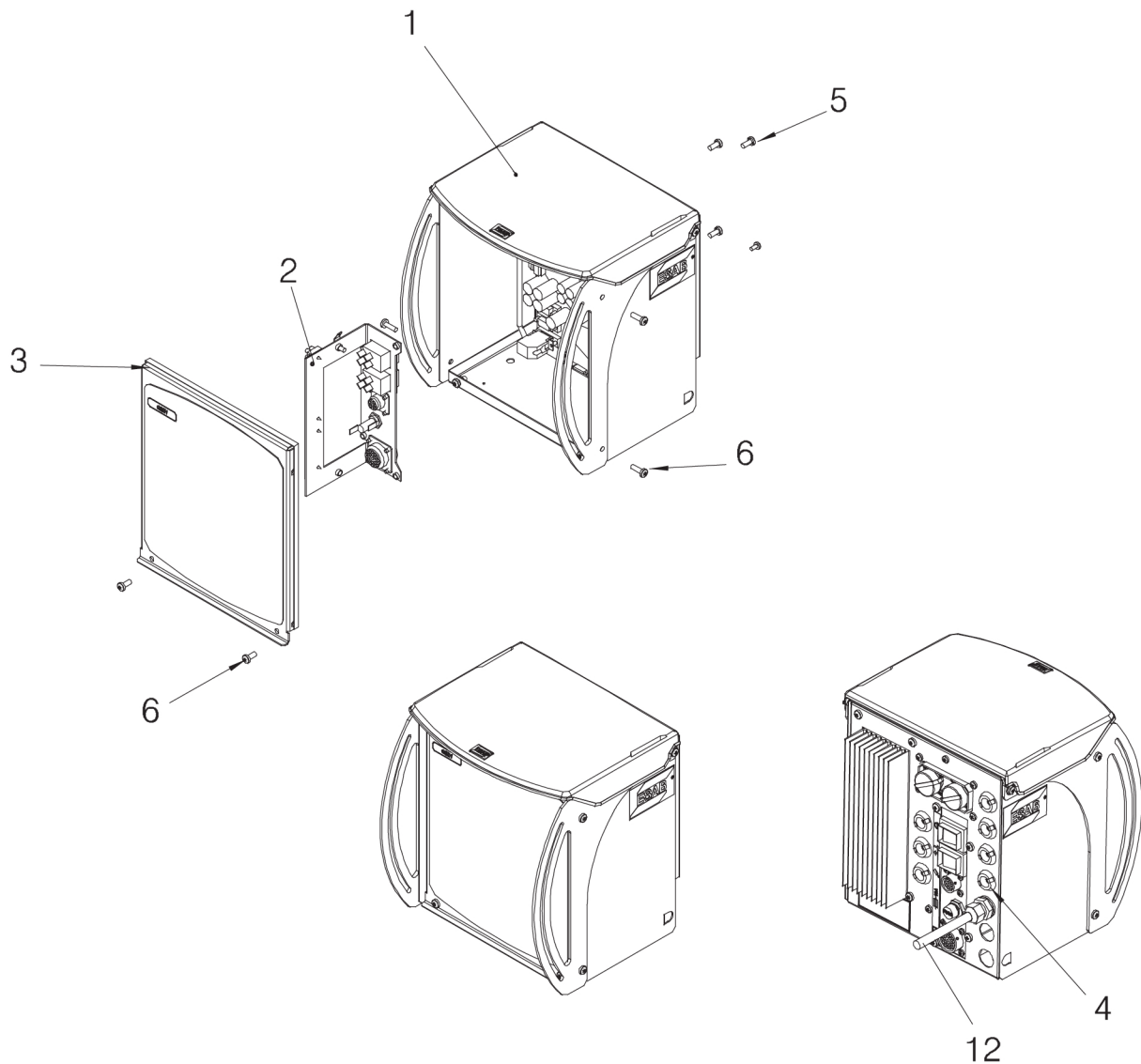
For accessories to the product, see the instruction manual.

SPARE PARTS	4
GMH	4
GMH with MMC	5
Basic module	6
Circuit board module	8
Outlet module, GMH portable control box	9
MMC GMH and Cable set GMH with MMC	11
MMC with portable control box	13
Portable control box.....	14
Remote cable	16
Sensor	17
Slide cross for sensor.....	18
Slide cross for sensor and laser lamp	19
Control cable between GMH and joint tracking finger.....	20

SPARE PARTS

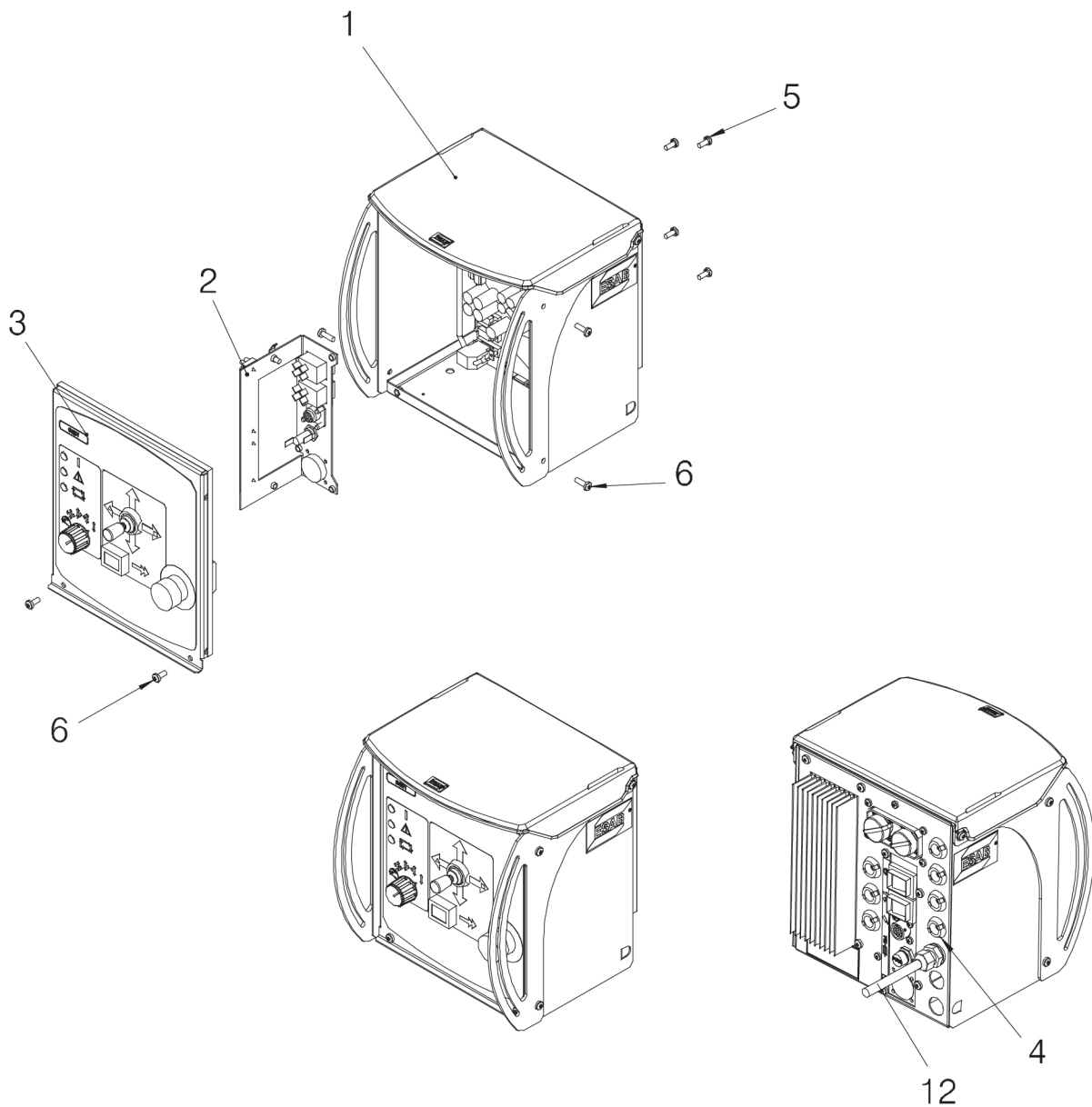
GMH

Item	Qty.	Ordering no.	Denomination	Notes
		0460 503 880	GMH	Without control panel
1	1	0460 468 880	Basic module	
2	1		Outlet module, GMH portable control	
3	1	0460 462 880	MMC without controls	
4	7	0194 292 020	Grommet	Ø20
5	4		Screw	MRT, ground-cutter (black), M5×12
6	6		Screw	MRT (black), M5×16
12	1	0460 673 880	Supply cable	L=5m



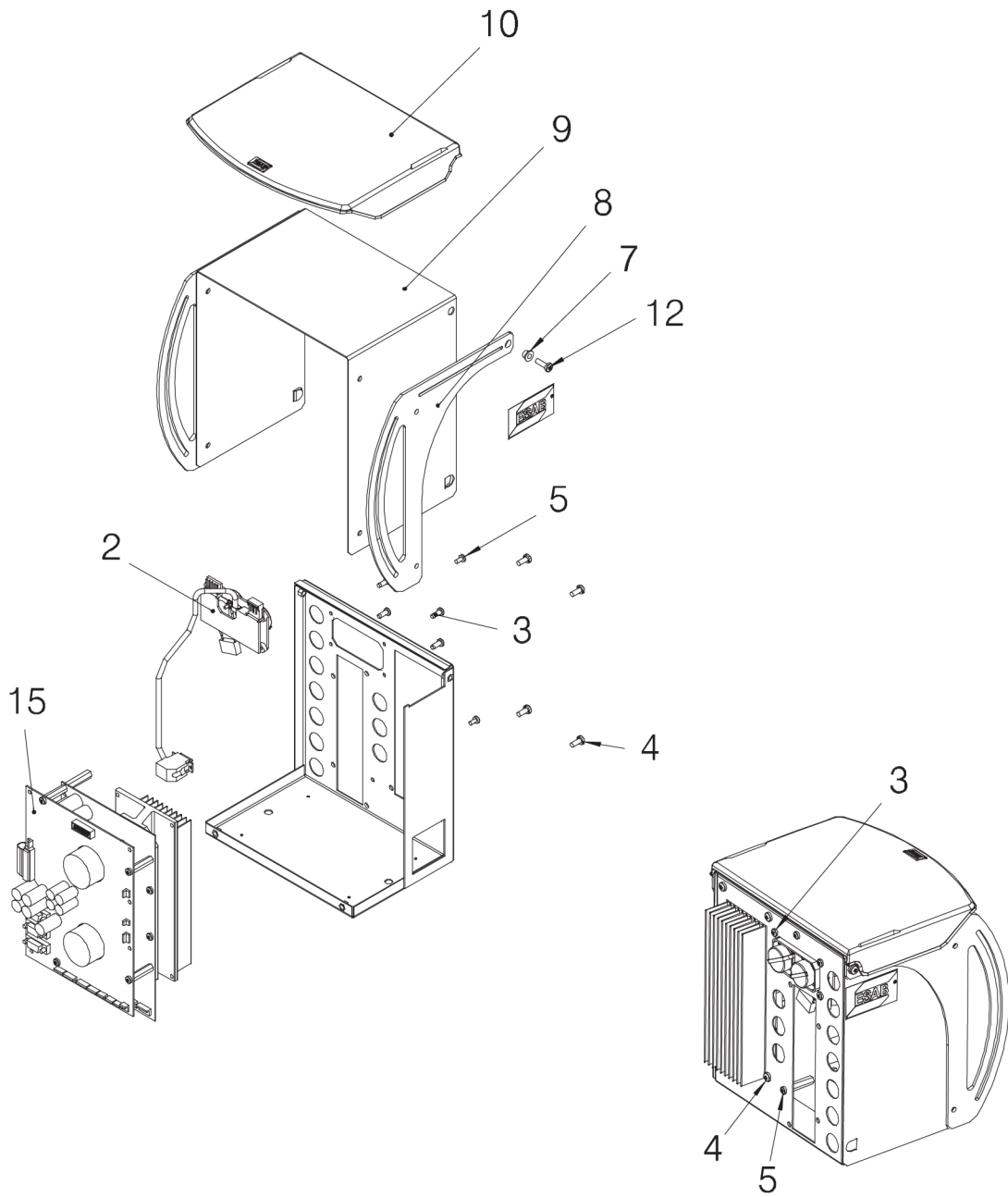
GMH with MMC

Item	Qty.	Ordering no.	Denomination	Notes
		0460 503 881	GMH with MMC	With control panel
1	1	0460 468 880	Basic module	
2	1		Outlet module, GMH MMC	
3	1	0460 462 882	MMC GMH	
4	7	0194 292 020	Grommet	Ø20
5	4		Screw	MRT ground-cutter (black), M5×12
6	6		Screw	MRT (black), M5×16
12	1	0460 673 880	Supply cable	L=5m



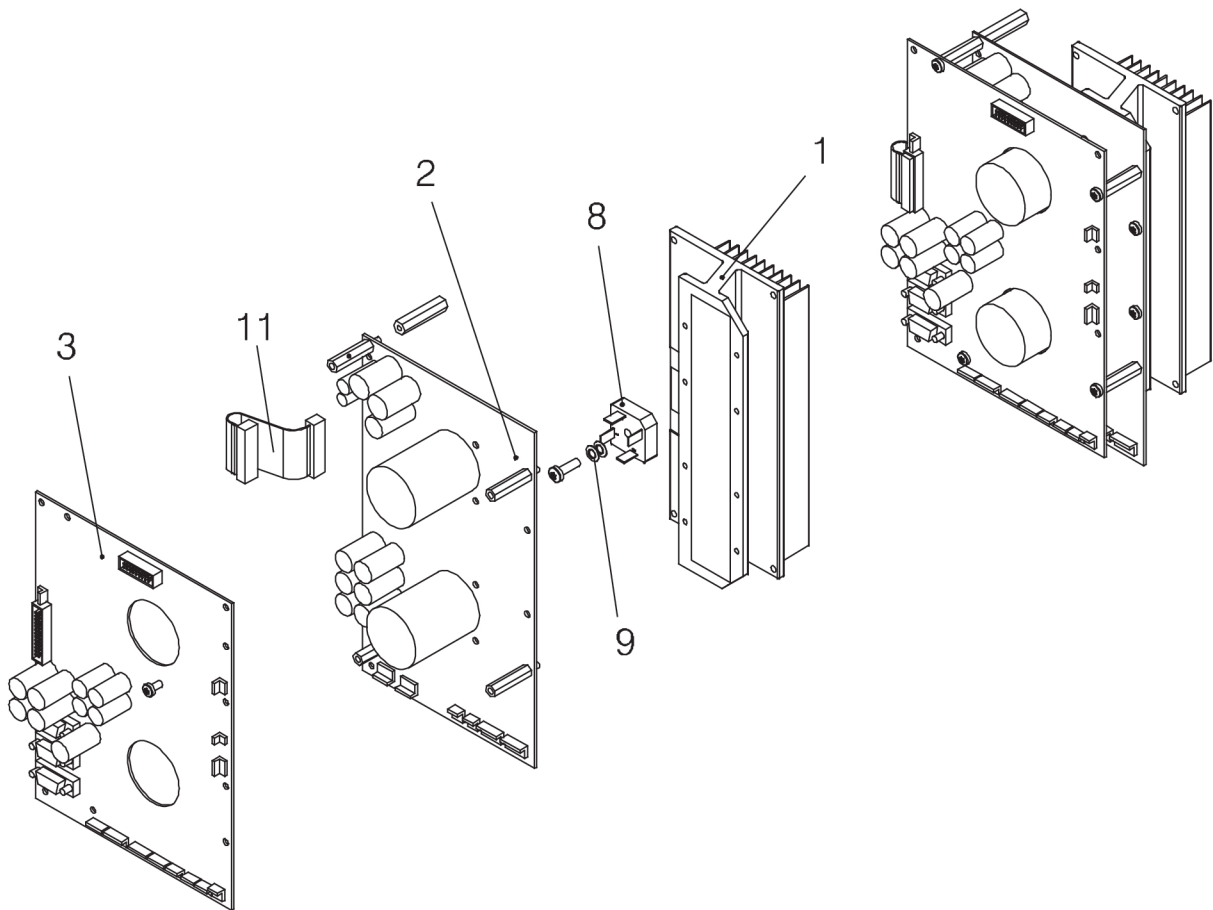
Basic module

Item	Qty.	Ordering no.	Denomination	Notes
		0460 468 880	Basic module	
2	1	0458 679 885	Operating contact CAN tractor	
3	4		Screw	RX-PT, 6-19×18
4	6		Screw	MRT ground-cutter, M5×12
5	8		Screw	MRT, M4×8, DIN 7985
7	2	0460 465 001	Spacer for hinge	
8	2	0460 463 001	Protective frame	
9	1	0460 430 001	Cover	
10	1	0460 469 001	Sun visor	
12	2		Screw	MRT (black), M5×16
15	1		Circuit board module	



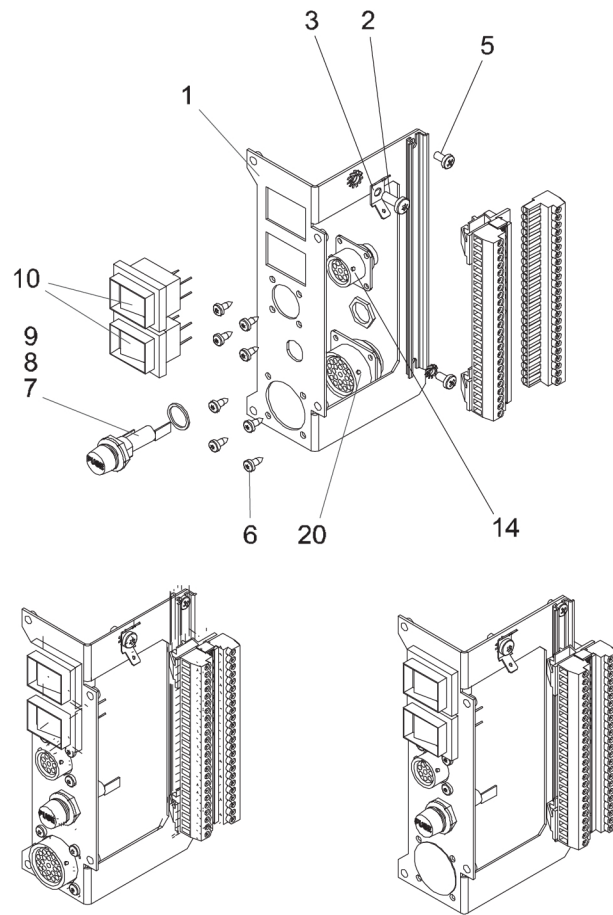
Circuit board module

Item	Qty.	Ordering no.	Denomination	Notes
			Circuit board module	
1	1	0460 461 001	Heat sink	
2	1	0487 528 881	PC board, motor drive	
3	1	0487 522 981	PC board, motor control	GMH
		0487 522 982	PC board, motor control	GMH with inductive sensor
8	1	0460 648 880	Cable set with rectifier bridge	
9	2		Spring washer	
11	1	0193 700 703	Ribbon cable + connectors	26-pole



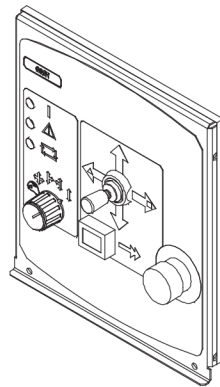
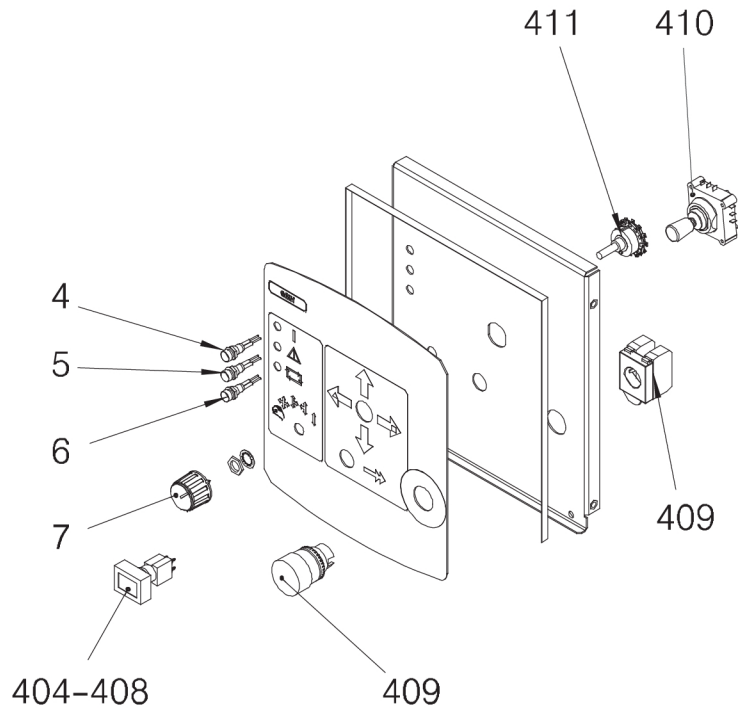
Outlet module, GMH portable control box

Item	Qty.	Ordering no.	Denomination	Notes
			Outlet module, GMH portable control box	GMH
2	1		Screw	MRT ground-cutter, M5×12
3	1		Flat pin	6.3×0.8 M6
5	2		Screw	RTS st2, 9×13
6	8		Screw	RX-PT 6-19×18
7	1	0193 701 001	Fuse holder	Fine, 5×12
8	1	0193 701 002	Fuse holder	5×20
9	1	0567 900 116	Fuse	10 A (slow)
10	2	0193 317 001	Switch	
14	1	0368 544 004	Contact	Burndy, 8-pole
20	1	0368 544 005	Contact	Burndy, 24-pole
			Outlet module, GMH MMC	GMH
2	1		Screw	MRT ground-cutter, M5×12
3	1		Flat pin	6.3×0.8 M6
5	2		Screw	RTS st2, 9×13
6	4		Screw	RX-PT 6-19×18
7	1	0193 701 001	Fuse holder	Fine, 5×12
8	1	0193 701 002	Fuse holder	5×20
9	1	0567 900 116	Fuse	10 A (slow)
10	2	0193 317 001	Switch	
14	1	0368 544 004	Contact	Burndy, 8-pole



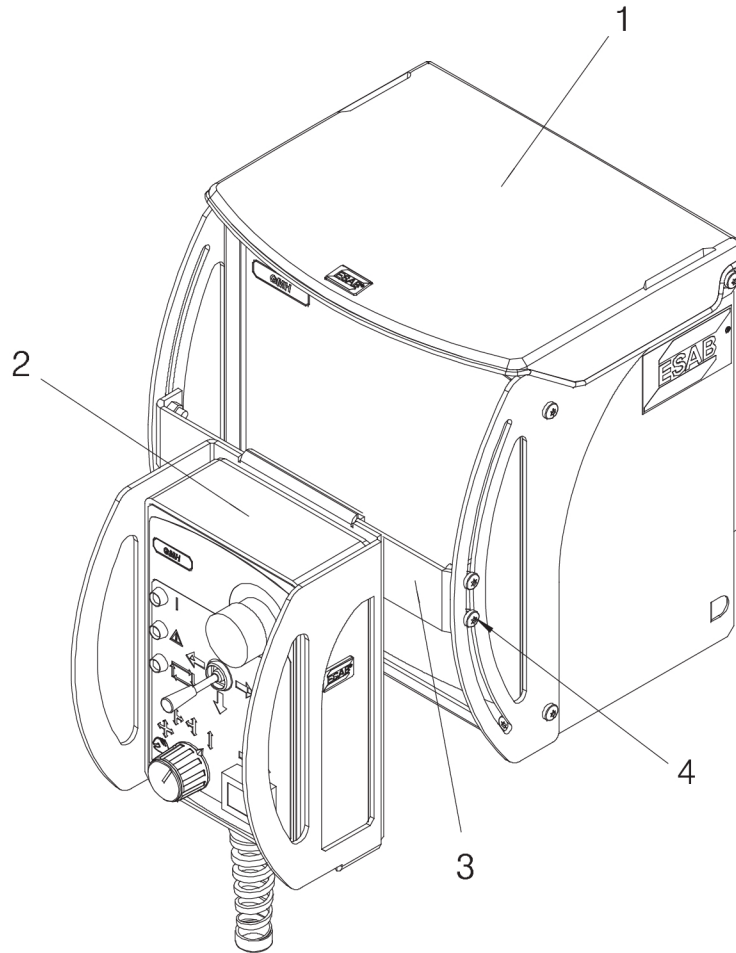
MMC GMH and Cable set GMH with MMC

Item	Qty.	Ordering no.	Denomination	Notes
		0460 462 882	MMC GMH	GMH
4	1	0194 282 001	LED indicator	White, 24 V
5	1	0194 282 002	LED indicator	Yellow, 24 V
6	1	0194 282 003	LED indicator	Green, 24 V
7	1	0460 600 326	Knob	Grey with arrow, d28–6 mm
			Cable set GMH with MMC	
404	2	0415 000 020	Contact block	1NO+1NC
405	1	0415 000 027	Cap orange	18×24
406	1	0415 000 001	Push-button	18×24
407	1	0415 000 047	Bulb	14 V, 80 mA
408	1	0415 000 058	Splash water shield	
409	1	0460 424 881	Emergency stop	
410	1	0460 795 001	Joystick	
411	1	0192 722 004	Switch	5 settings



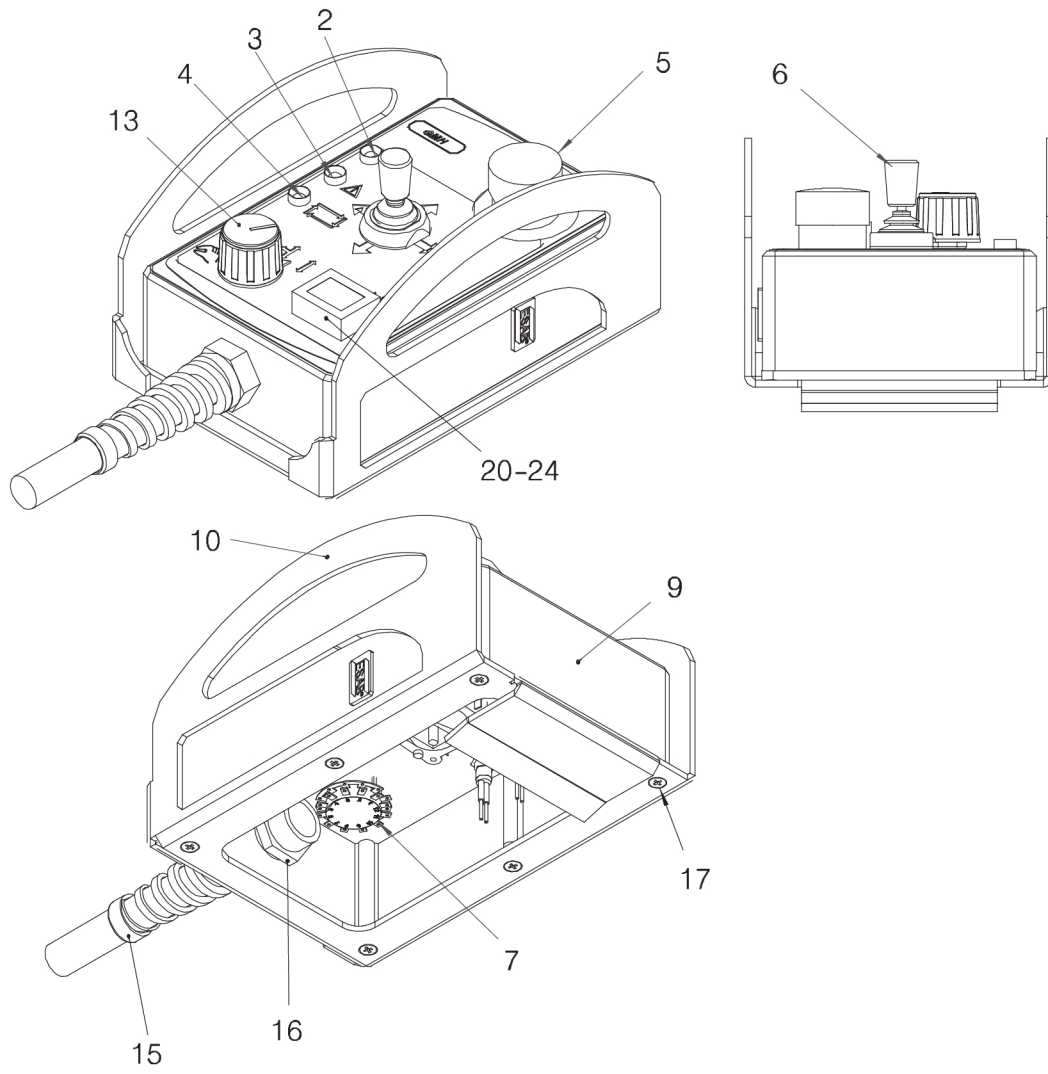
MMC with portable control box

Item	Qty.	Ordering no.	Denomination	Notes
		0460 698 880	MMC with portable control box	GMH
1	1	0460 503 880	GMC without MMC	
2	1	0460 570 880	Portable control box	
3	1	0460 481 001	Bracket	
4	4	0460 600 326	Screw	MRT (black), M5×16



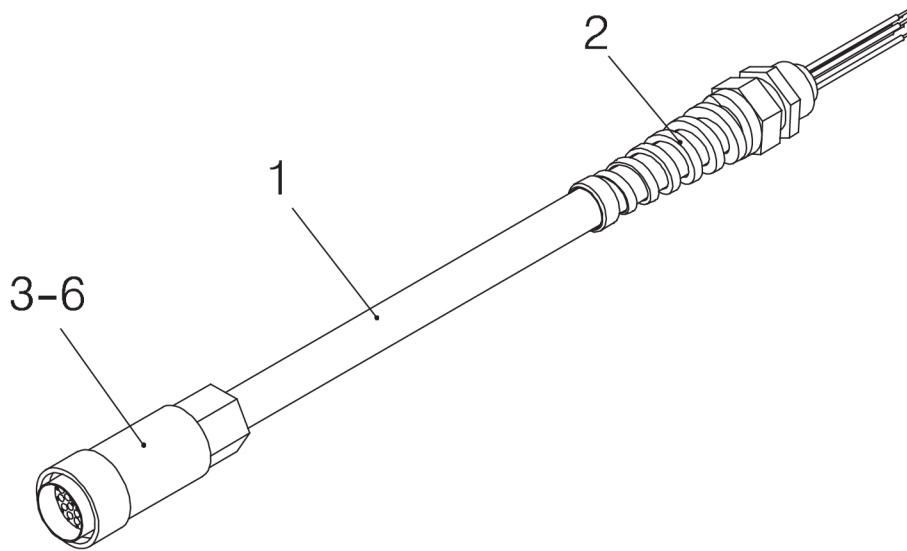
Portable control box

Item	Qty.	Ordering no.	Denomination	Notes
		0460 570 880	Portable control box	GMH
2	1	0194 282 001	LED indicator	White, 24 V
3	1	0194 282 002	LED indicator	Yellow, 24 V
4	1	0194 282 003	LED indicator	Green, 24 V
5	1	0460 424 881	Emergency stop complete	
6	1	0460 795 001	Joystick	
7	1	0194 055 009	Switch	5 settings
10	1	0460 569 001	Cover	
13	1	0460 600 328	Knob	Grey with arrow, d28-6 mm
15	1	0460 759 880	Remote cable	4 m
16	1		Nut	pr22.5
17	6		Screw	MFX-PH, M4×16
20	1	0415 000 020	Contact block	1NO+1NC
21	1	0415 000 033	Cap orange	18×18
22	1	0415 000 002	Push button	18×18
23	1	0415 000 048	Bulb	28 V, 40 mA
24	1	0391 844 022	Splash water shield	



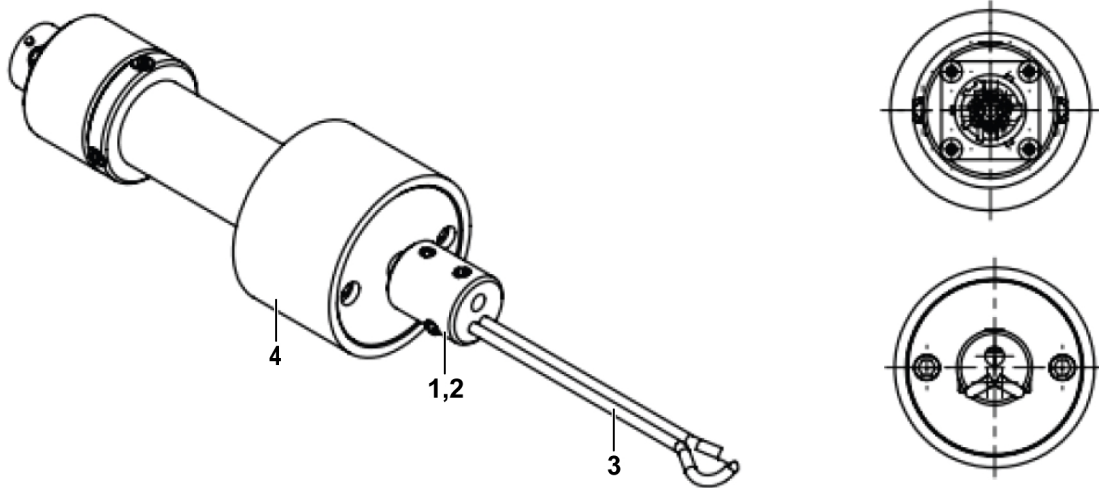
Remote cable

Item	Qty.	Ordering no.	Denomination	Notes
		0460 759 880	Remote cable	4 m
1	4	0193 963 002	Cable screened	6×1.5 mm ² , 12×0.5 mm ²
2	1	0193 307 105	Cable fitting	stp-b 16
3	1	0194 200 023	Cable gland with tube	23-pole
4	1	0194 182 023	Pin plug	23-pole
5	11	0323 945 001	Connector pin	rm20m-13k
6	1	0323 945 004	Connector pin	rm16m-13k



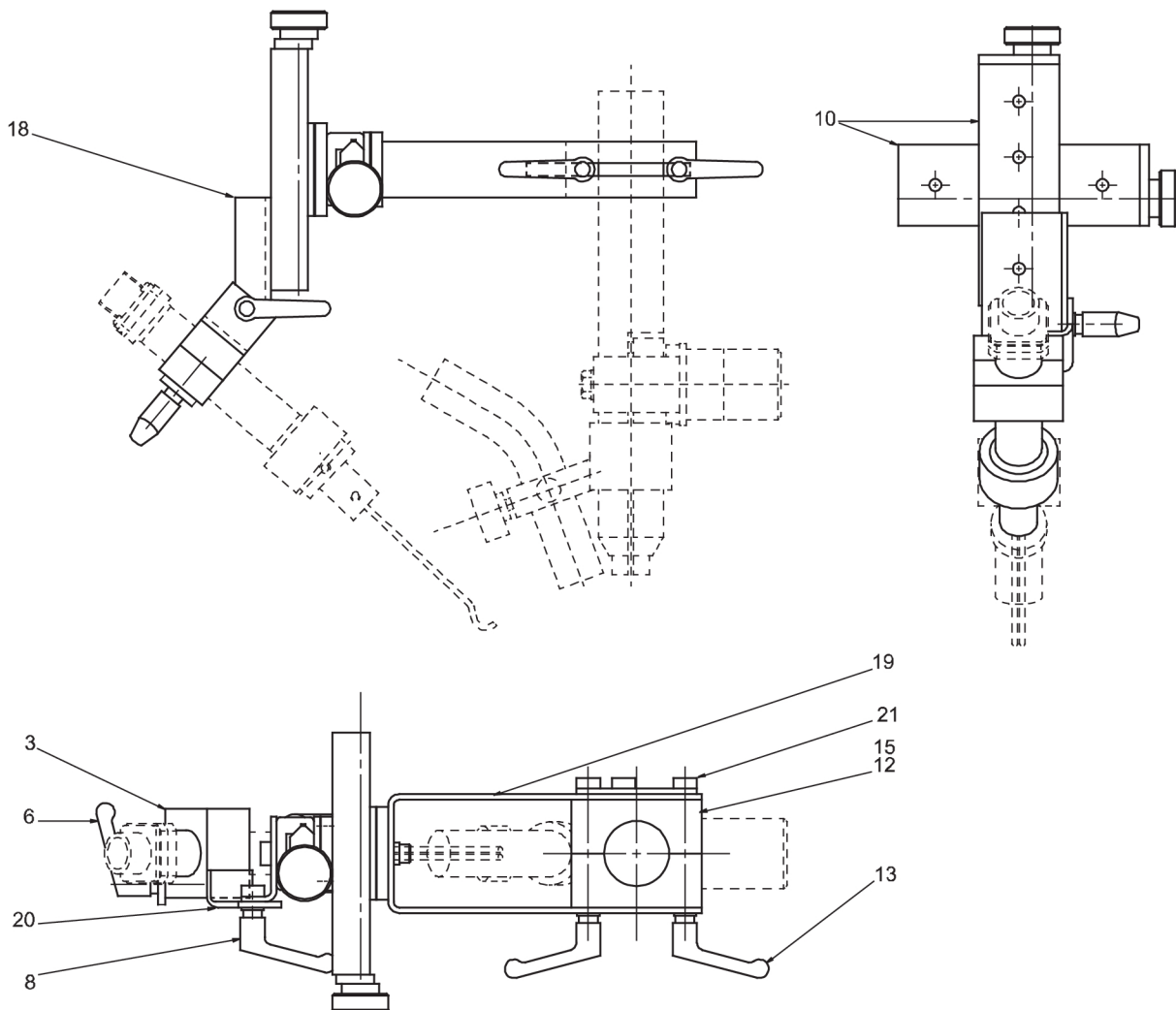
Sensor

Item	Qty.	Ordering no.	Denomination	Notes
		0416 688 881	Sensor	Generation 2
1	1	0415 329 001	Guide arm attachement	
2	4	0212 204 545	Screw stop	SK6SS
3	2	0146 586 001	Guide finger probe	
4	1	0412 013 001	Protection bellow	



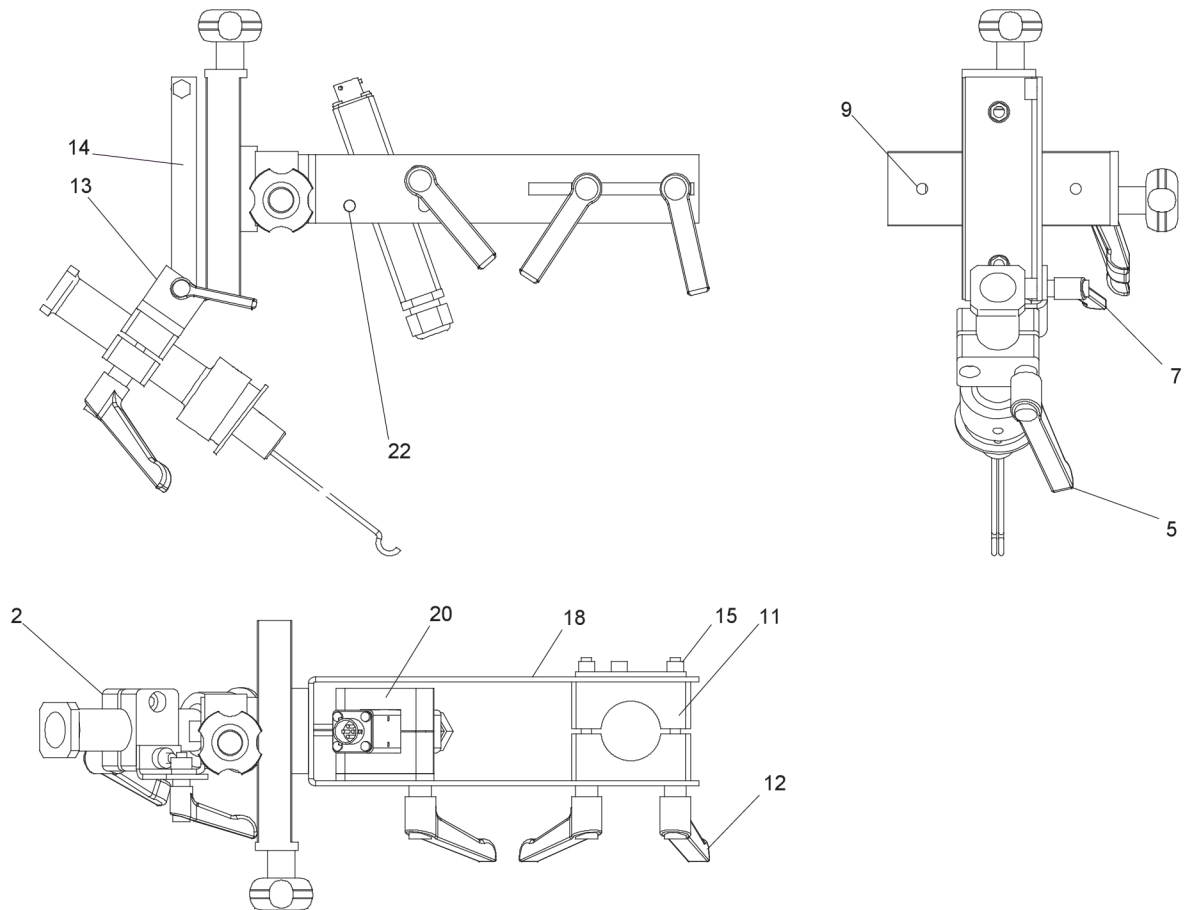
Slide cross for sensor

Item	Qty.	Ordering no.	Denomination	Notes
		0416 739 880	Slide cross for sensor	
3	1	0413 366 112	Clamp	D25
6	3	0193 570 120	Locking lever	M6×50×63
8	1	0193 570 109	Locking lever	M6×16×45
10	2	0433 851 001	Mini slide	
12	1	0413 366 115	Clamp	D35
13	2	0193 570 150	Locking lever	M6×75
15	1	0413 366 320	Clamp	D20
18	1	0417 096 880	Mounting bracket	
19	1	0417 097 001	Clamp	
20	1	0417 098 880	Mounting bracket	
21	1	0417 099 880	Plate	
22	1	0417 097 002	Clamp	




Slide cross for sensor and laser lamp

Item	Qty.	Ordering no.	Denomination	Notes
		0821 425 880	Slide cross for sensor and laser lamp	
2	1	0413 366 112	Clamp	
5	2	0193 570 120	Locking arm adjustable	
7	1	0193 570 109	Locking arm adjustable	M6
9	2	0433 851 001	Mini slide	
11	1	0413 366 115	Clamp	70×58×30, D35
12	2	0193 570 150	Locking larm adjustable	M6×75
13	1	0417 096 880	Mounting bracket	
14	1	0417 098 880	Angle bracket	
15	1	0417 099 880	Plate for slide cross	
28	1	0821 423 001	Clamp	
20	1	0818 935 001	Clamp	vh 25
22	4	0219 504 303	Cup	D12.5/6.2



Control cable between GMH and joint tracking finger

Ordering no.	Denomination	
0416 749 980	Control cable 19 m	
0416 749 981	Control cable 22 m	
0416 749 982	Control cable 25 m	
0416 749 983	Control cable 28 m	
0416 749 984	Control cable 32 m	
0416 749 985	Control cable 36 m	
0416 749 986	Control cable 40 m	
0416 749 987	Control cable 2 m	
0416 749 988	Control cable 5 m	
0416 749 989	Control cable 9 m	



A WORLD OF PRODUCTS AND SOLUTIONS.



For contact information visit esab.com

ESAB AB, Lindholmsallén 9, Box 8004, 402 77 Gothenburg, Sweden, Phone +46 (0) 31 50 90 00

manuals.esab.com

